

REMOTE DESKTOP FOR ATA APPLE MAC USERS

If you are a user of Apple MAC, you will require either of the following software to be able to work remotely on the Academy Network: Microsoft Remote Desktop Connection 2.01 or Terminal Server Client. Both software have slightly different interfaces when connecting, but once connection is established, they work in exactly the same way.

METHOD 1:

Microsoft Remote Desktop Connection 2.0.1

A. Download and install RDC 2.01. You can download Microsoft Remote Desktop Connection from the following links:

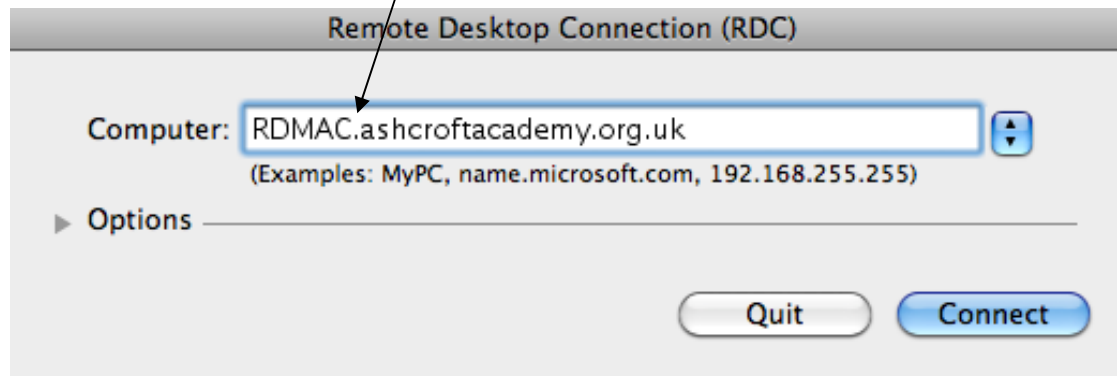
1. <http://www.macupdate.com/info.php/id/8431/microsoft-remote-desktop-connection>

or

2. <http://www.microsoft.com/downloads/en/details.aspx?FamilyID=CD9EC77E-5B07-4332-849F-046611458871>

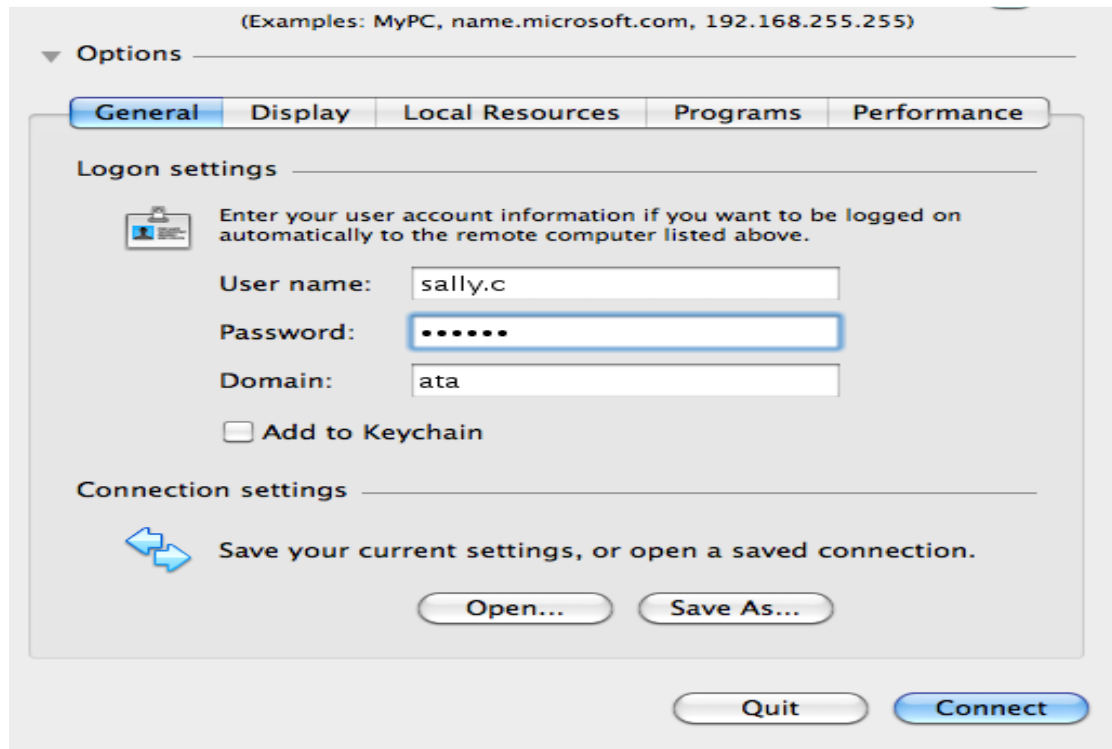
Instructions on how to install it are available in the same location.

B. Once installed, double click to launch the Remote Desktop Connection, In Computer: type **RDMAC.ashcroftacademy.org.uk** as shown below, then click **Connect**

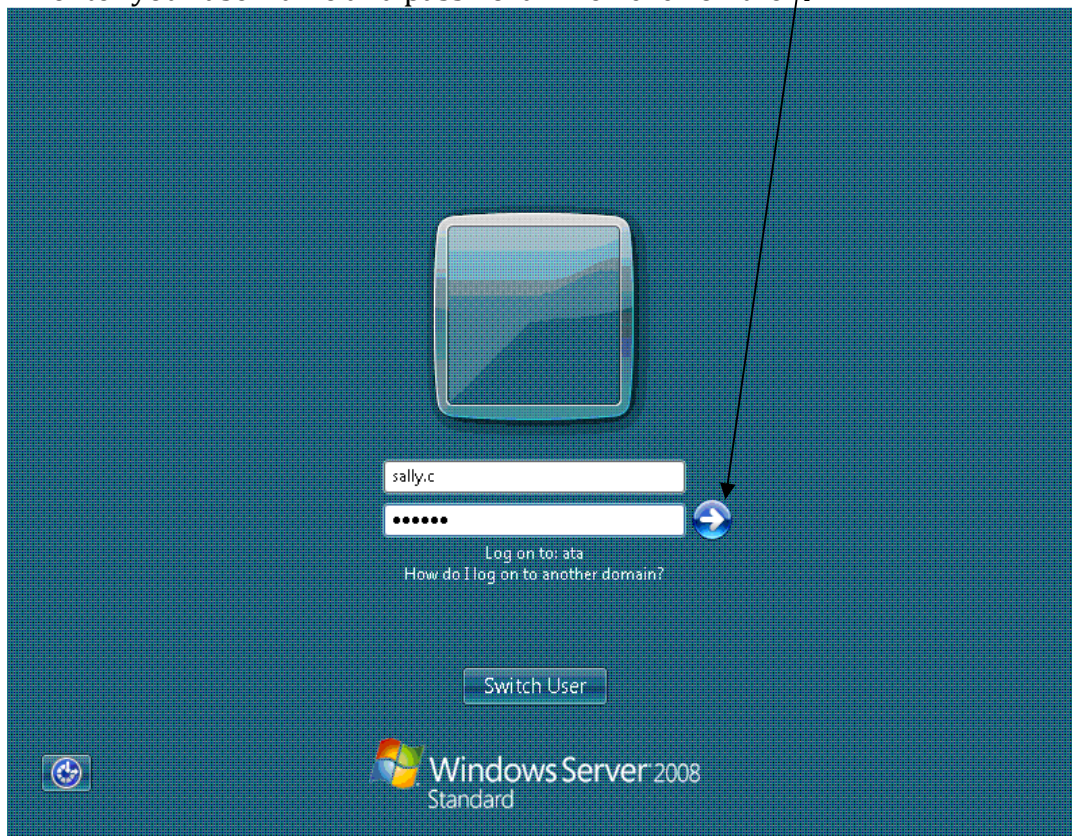


*Optionally, you may want to click on >Options to display more options e.g. to type in your username, password, domain, before clicking on **Connect**:*


REMOTE DESKTOP FOR ATA APPLE MAC USERS

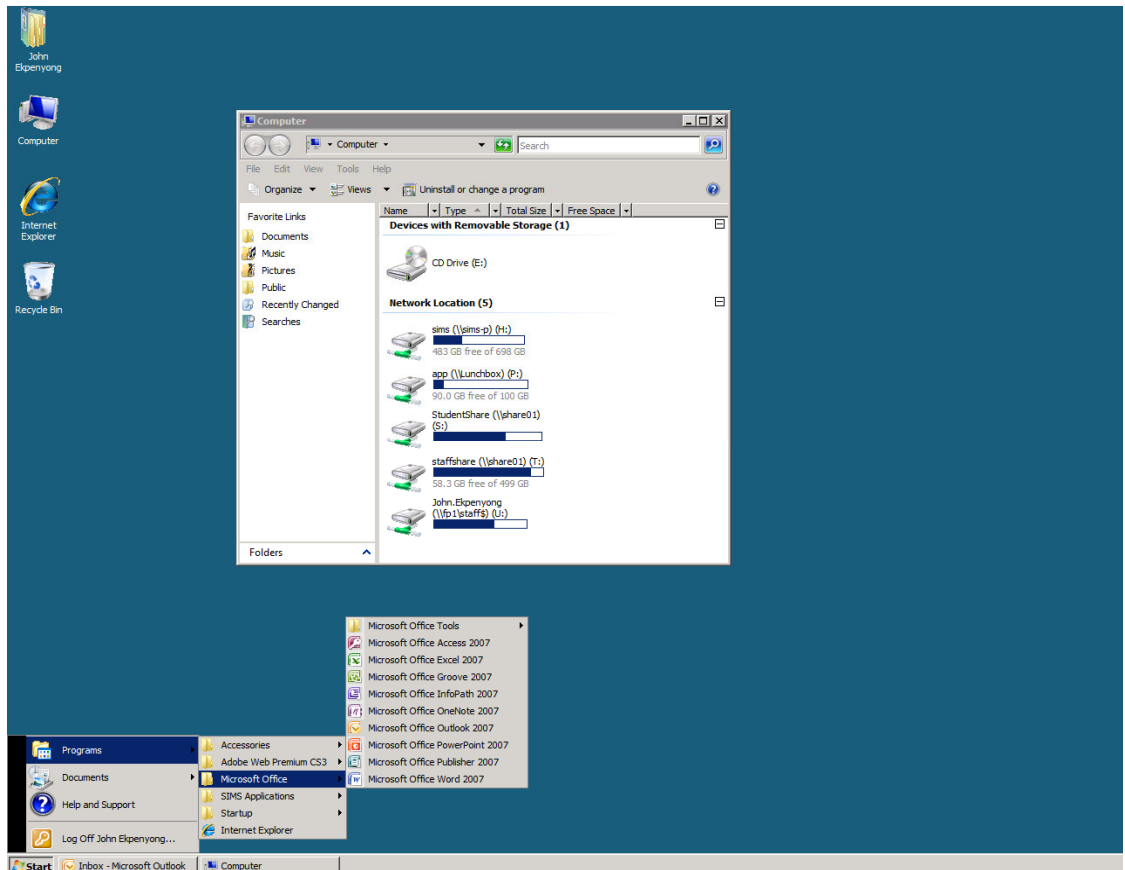


- C. If you prefer to click on **Connect** without filling in your username and password, you will arrive at the following screen where you can still enter your username and password. Then click on the →



REMOTE DESKTOP FOR ATA APPLE MAC USERS

- D. Double Click on the **'Computer'**  on the desktop to have access to all the drives you would normally have access to when in the Academy. Click on **Start, Programs**, for access to **Adobe, Microsoft Office and Others**.



METHOD 2:

Terminal Server Client

- A. You can download X Terminal Server Client from <http://desktopecho.com/tsclientx/>.

Instructions on how to install TSClientX including system requirements can also be found at the same url.



- B. Once installed, initiate the Terminal Server Client by double clicking on the icon, in Computer: type **RDMAC.ashcroftacademy.org.uk** and complete the rest of the details with your own details before clicking on **✓Connect**.

