

RANGER SOFTWARE

ICT Management, Security and Remote Access

Ranger Outpost Client Quick Start Guide

www.rangersuite.com



For further details regarding Ranger Outpost:

Product information

www.rangersuite.com/products/outpost

Other products

www.rangersuite.com/products

Ranger Outpost Client - Quick Start Guide

Introduction

Ranger Outpost provides a safe and effective way for users to transfer work between their home computer and the network, via the Internet, 24 hours a day. It has been designed specifically for educational use and so is secure, simple to configure and easy to use.

The Ranger Outpost Client software is all you need to install and use Ranger Outpost on your home computer.

Step 1 - Obtaining the Installation File

Your network administrator will provide you with an installation file on a CD, a USB memory stick or as a file to be downloaded from a website. The file is normally around 5MB in size, with an icon as shown.



Successful installation and use of Ranger Outpost requires the following:

- Your computer has Windows - 95, 98, ME, W2K, XP or Vista
- You are logged on as a user with administrative rights
- You have an internet connection

Step 4 - Performing a basic file transfer

Ranger Outpost has a Windows-type 'look and feel', so you will intuitively understand how to navigate around it. To download a file from the network area to your home computer:

- Select a file from the network area
- 'Drag and drop' it onto your home computer

To upload a file from your home computer to the network area:

- Select a file from your home computer
- 'Drag and drop' it onto the network area

You will need to have the necessary software installed on your home computer. For example, if you do not have Publisher installed you will not be able to open and work on Publisher documents.

Step 2 - Installing the Ranger Outpost Client on your computer

- Double-click on the 'Setup Outpost Client' icon
- Click the OK button
- Click 'Read the licence...'
- Tick to 'Accept licence'
- Click the 'Install' button
- Click the 'Finish' button

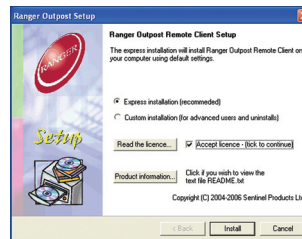


Image shows a file being copied from the network area

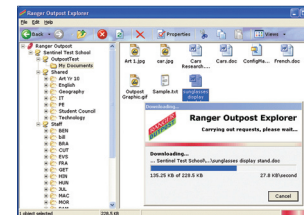
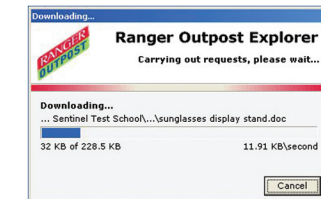
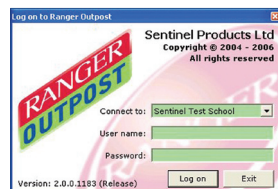


Image shows an entire folder being copied to the network area



Step 3 - Connecting to your network with Ranger Outpost

- Connect to the Internet from your remote PC
- Double-click the icon on your desktop



- Select your site in the 'Connect to:' box
- Enter the User name and Password you would normally use to logon to your network
- Click the Log on button

